



Milesight

Video Management System Lite
User Manual

Milesight Technology Co.,Ltd.

V3.06

Table of Contents

Chapter I Introduction.....	2
1.1 Milesight VMS Lite Introduction.....	2
1.2 Key Features.....	2
Chapter II Installation.....	3
2.1 System Operating Environment.....	3
2.2 Installation Guide.....	3
Chapter III Operations and Settings.....	6
3.1 Login Milesight VMS Lite.....	6
3.2 Settings.....	6
3.2.1 Device Settings.....	7
3.2.2 Search Device.....	9
3.2.3 Alarm Settings.....	9
3.2.4 Record Settings.....	11
3.2.5 Change Password.....	12
3.2.6 Local Settings.....	12
3.3 File.....	13
3.4 Tool.....	13
3.5 Help.....	14
3.6 Toolbar.....	14
Chapter IV Live view.....	15
4.1 Device Tree Window.....	16
4.2 Live toolbar.....	17
4.3 Live view workspace.....	17
4.4 PTZ control.....	18
Chapter V Playback.....	19
Chapter VI Map.....	22
6.1 Toolbar.....	22
6.2 Pop-up Menu.....	23
6.3 Add the hot.....	23
Chapter VII Service.....	24

Chapter I Introduction

1.1 Milesight VMS Lite Introduction

Milesight VMS Lite is a video management system that works with the IP cameras to provide Video Monitoring, Recording Setting and Event Management functions. It is a future-proof network video solution for up to 64 cameras. Adding new cameras to the system is easy without extra charge of additional equipment needed. The interface is simple and intuitive, with easy access to the most common activities, such as viewing live video, searching through recordings and exporting videos and snapshots. What's more, it is able to integrate with other devices through ONVIF.

This manual describes how to use and manage Milesight VMS Lite in your network environment. Some knowledge of network environment would be beneficial to the readers.

Should you require any technical assistance, please contact authorized service center.

1.2 Key Features

- ✧ Support 1/ 2/ 4/ 6/ 8/9 / 13/ 16/ 20/24 /30 /36 / 49 /64 channels playing synchronously
- ✧ Full screen for single or multiple channels
- ✧ The original screen size can adjust to screen ratio of 16:9 and 4:3
- ✧ Multiple play status
- ✧ Motion detection, alarm recording and image capture function
- ✧ H.264/MJPEG/MPEG-4 video compression
- ✧ Support dual-stream
- ✧ Support multiple PTZ control protocols
- ✧ Support ONVIF
- ✧ Easy to install and use
- ✧ Scalable and future-proof
- ✧ Support adding camera via P2P
- ✧ Support pre-recording for motion detection
- ✧ Support custom time length for schedule record

Chapter II Installation

2.1 System Operating Environment

OS: Windows XP/7/Vista/Server 2000/Server 2008
CPU: 1.66GHZ or faster
Memory: 1G MB or more
Graphic memory: 128MB or more
Internet protocol: TCP/IP

2.2 Installation Guide

Run the installation file and install the programs on your computer by following the on-screen instructions. After finishing installation, you will find the programs on the start menu or on the desktop.

Step1:

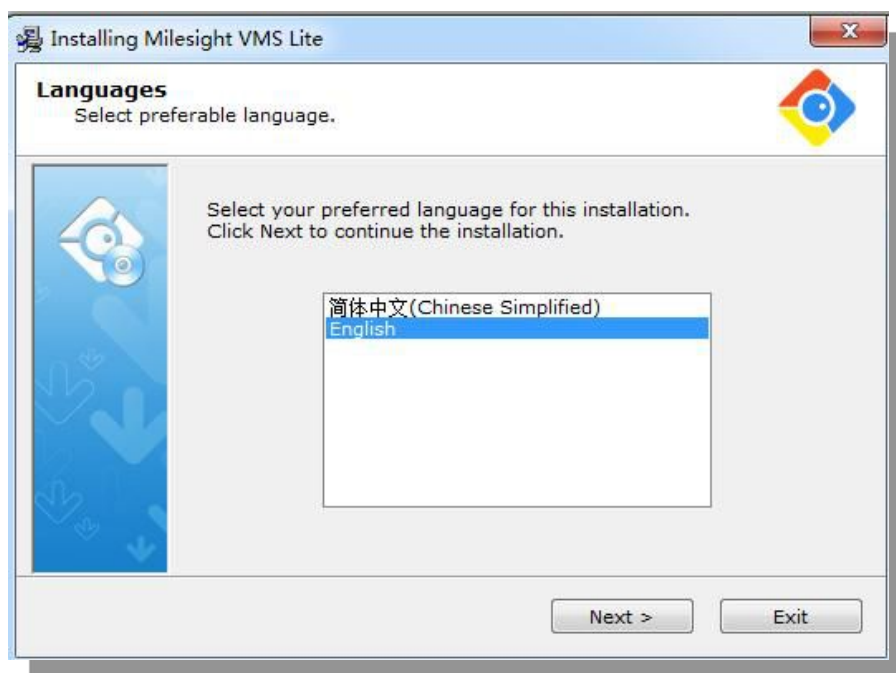


Figure 2.1

Step2:

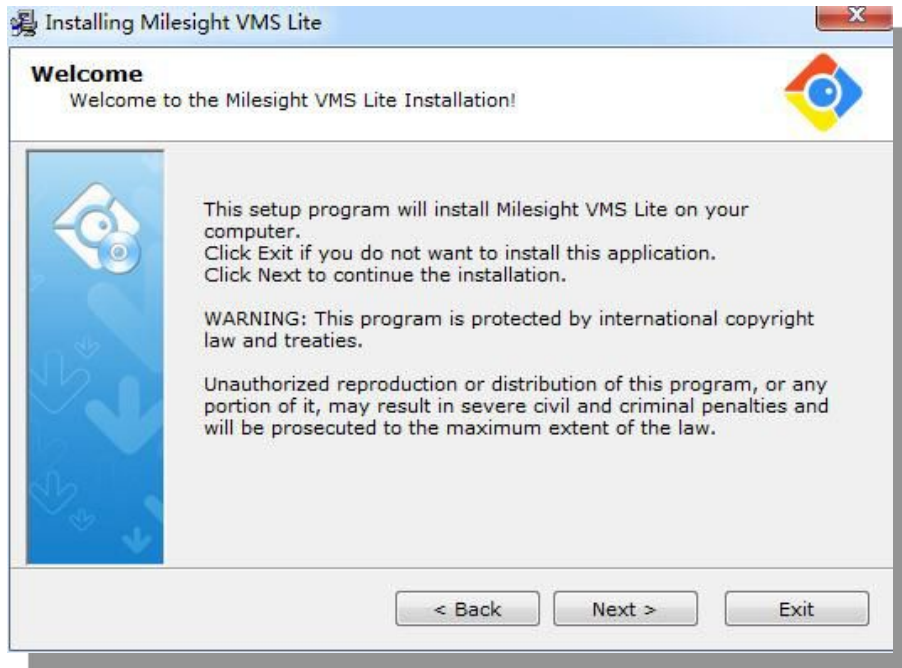


Figure 2.2

Step3:



Figure 2.3

Step4:

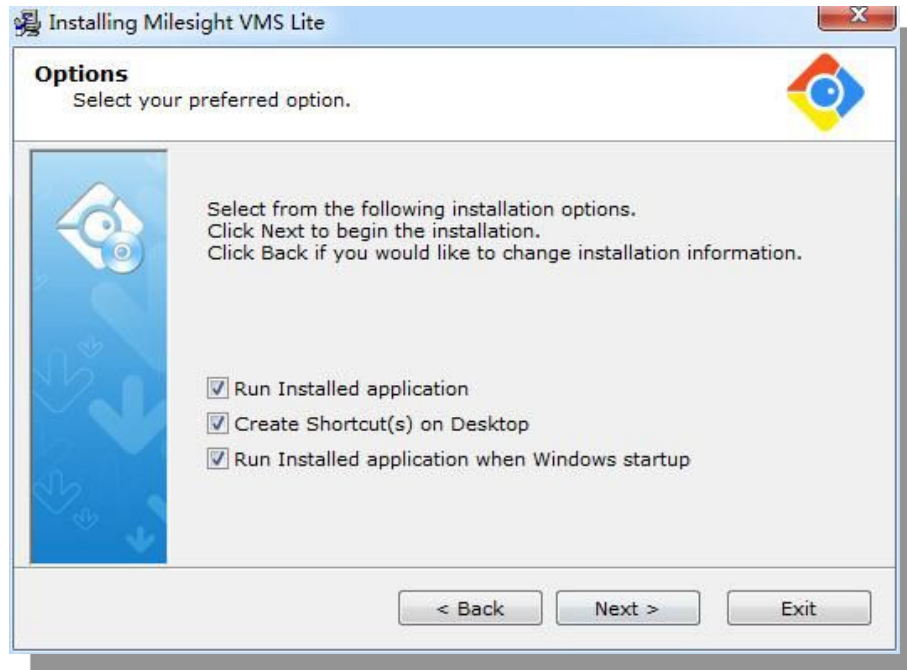


Figure 2.4

Step5:

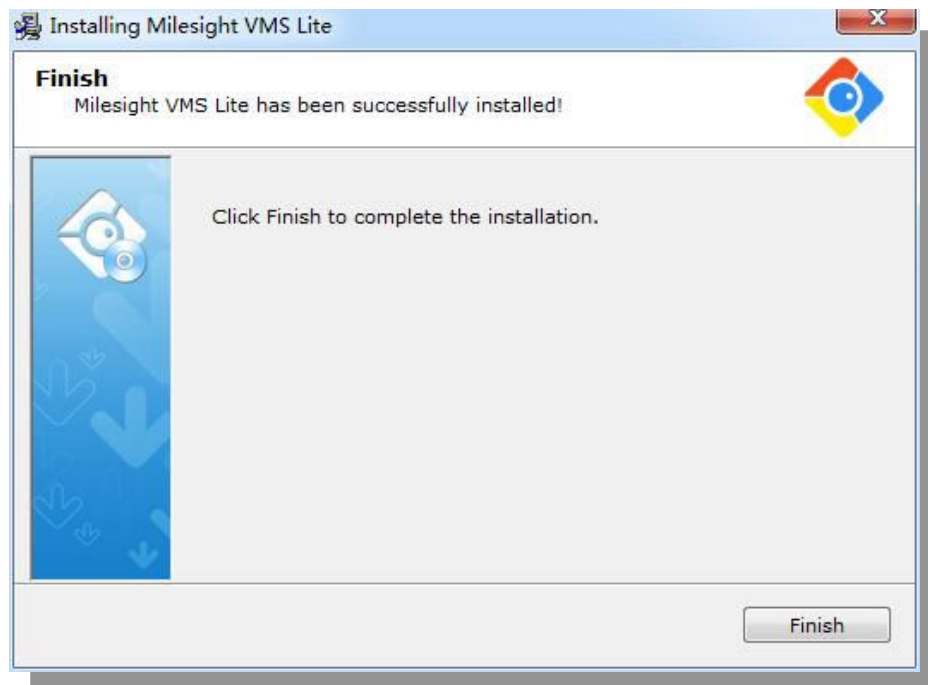


Figure 2.5

Chapter III Operations and Settings

3.1 Log In Milesight VMS Lite

When you log in Milesight VMS Lite, a window will pop up as below. There are two default user names “*admin*” and “*viewer*”. The “*admin*” user has all operation rights, while the “*viewer*” user has no right to modify any settings but to view the videos only. The default password is “*password*”. If the “*Auto Login*” is selected, Milesight VMS Lite will log in without keying in the Username and Password next time.

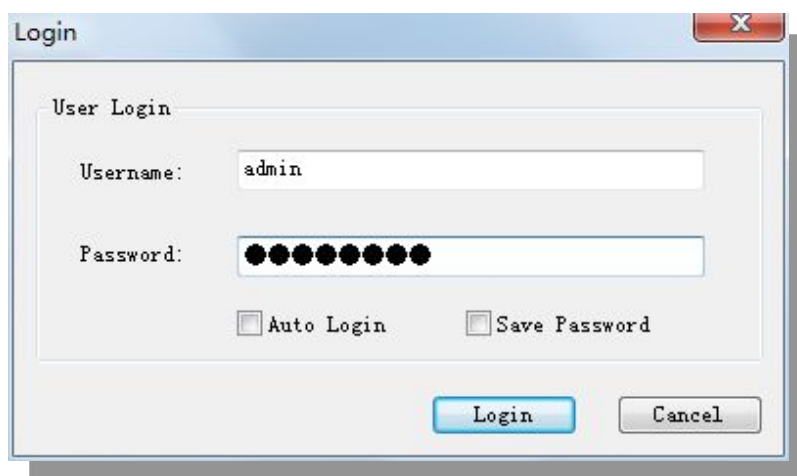


Figure 3.1

3.2 Settings

The first time you log in Milesight VMS Lite, configure the devices first, including searching device, adding them to the live view window, setting motion detection, setting recording schedule, etc. The details are as below.

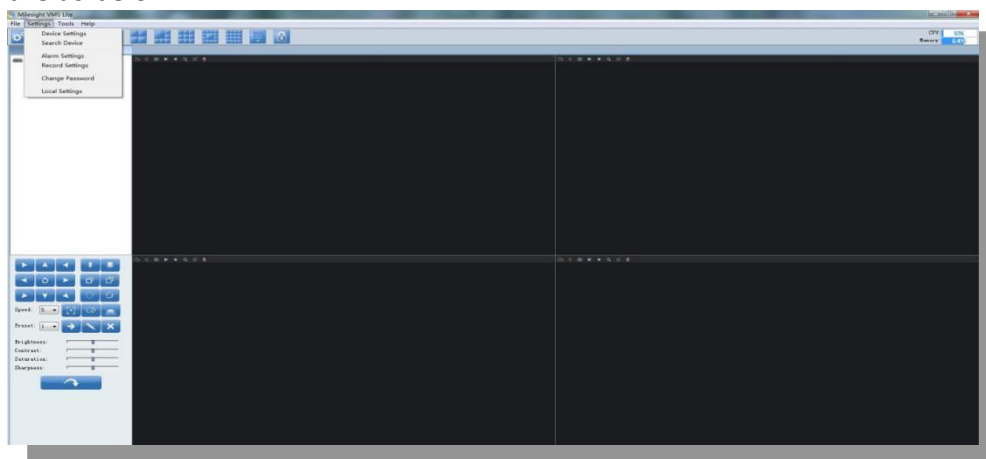


Figure 3.2

3.2.1 Device Settings

Click “Device Settings” button, the pop-out window is as below.

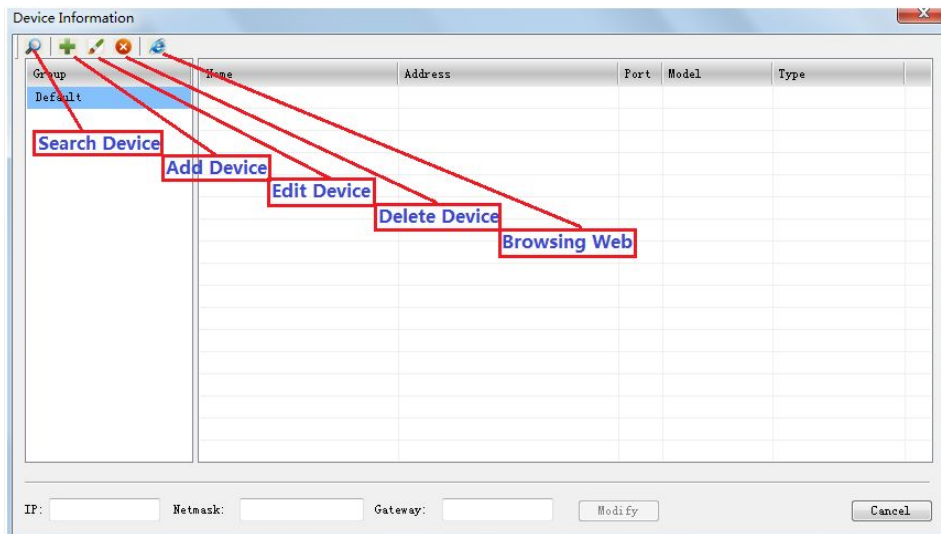


Figure 3.3

1. Search Device

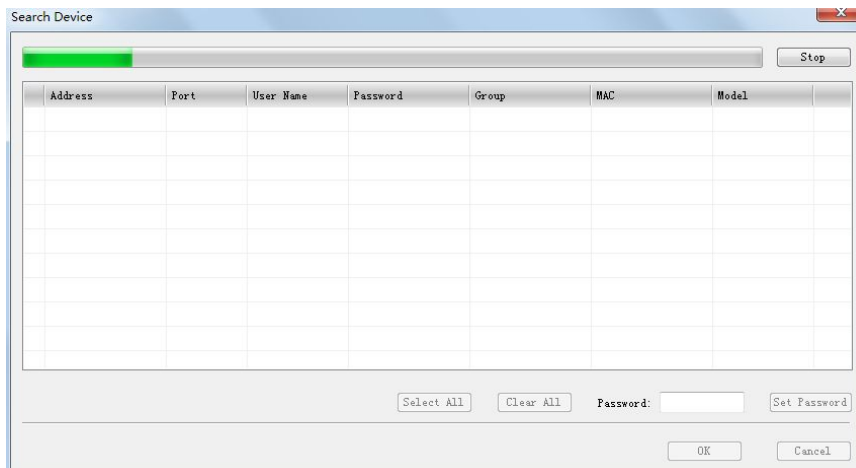


Figure 3.4

- Stop/Rescan* When searching the devices, you can stop it and rescan by clicking again.
- Select All* All the devices will be selected at a time.
- Clear All* All the devices will be unchecked at a time.
- Set Password* Enter the password at a time.
- OK* Click **[OK]** button to confirm the settings.
- Cancel* Exit quit.

2. Add Device

When the button is clicked, the window will show as below. You can add the device manually.

- 1) Through IP address you can add Milesight's devices and other devices supporting ONVIF.
- 2) Through RTSP stream you can add devices supporting RTSP.
- 3) Through P2P mode you can add devices supporting P2P.

Note:

- (1) Before you connecting by P2P mode, you need to register first. You can contact with Milesight for it. (After registering, you need to restart camera)
- (2) P2P can only support to play the second stream now.

Note: Those options with * are required.

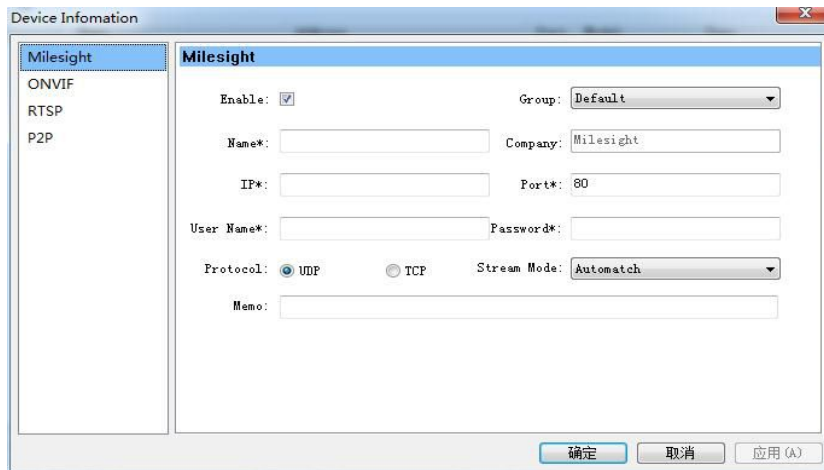


Figure 3.5

3. Edit Device

When the button is clicked, the window will show as below. Edit the information of the device.



Figure 3.6

4. Delete Device

Remove the device from Milesight VMS Lite.

5. Browsing Web

Browse the web of the device.

3.2.2 Search Device

Please refer to [3.2.1 Device Settings->Search Device](#).

3.2.3 Alarm Settings

Set the time schedule and the area to be monitored, the alarm will start automatically if any motion is detected in the set area.

When the button is clicked, the window will show as below.

Step1: Make sure you have selected the device and the [\[Enable\]](#) button is checked.

Step2: Set the motion area to be monitored.

Step3: Set the recording schedule time on the time table.

Step4: Select a templet for each day.

Step5: Click [\[Apply\]](#) or [\[OK\]](#) to confirm the settings.

Step6: Repeat step 1 to 5 to set other devices.

Note: [\[Capture Image\]](#): How many images to be captured when alarm is triggered.

[\[Record Video\]](#): Pre Record refers to recording the video before the alarm is triggered, while post record refers to recording the video after the alarm is triggered. You can change the length of the files to be recorded. (If this option is not checked, the camera will not record)

[\[Play Audio\]](#): Sound Alarm will be triggered when alarm is enabled.

[\[The alarm still could be triggered even when there is no live view\]](#): Alarm can be triggered even when the window of live view is closed.

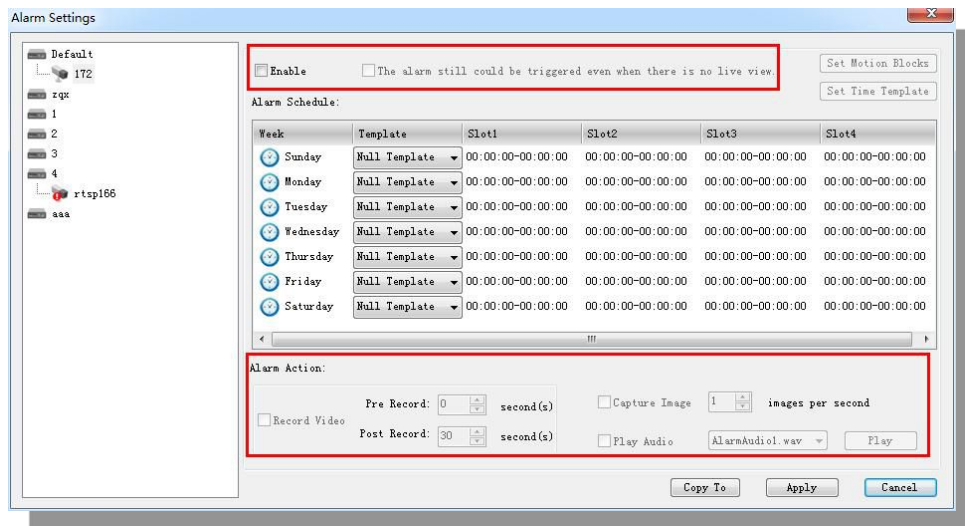


Figure 3.7

Set Motion Blocks

When the button is clicked, the window will show as below. Do make sure the specific device and [\[Enable\]](#) button are both selected before setting motion blocks.

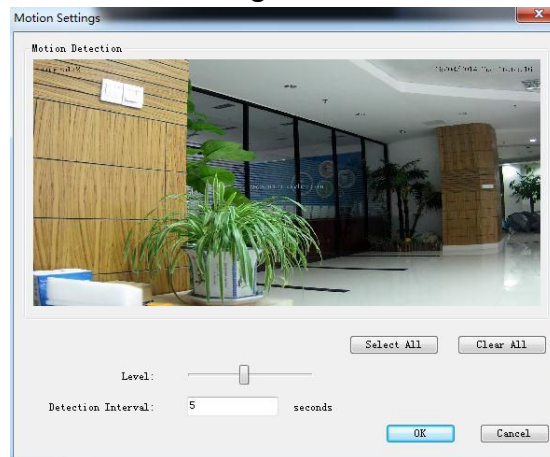


Figure 3.8

Select All Select all of the area to be detected, or draw a certain area by mouse.

Clear All Clear all of the area.

Level Different levels to trigger alarm.

Detection Interval How often to trigger alarm.

Set Time Templet

When the button is clicked, the window will show as below. There are 9 time templets on the list.

Step1: Click the templet on the left.

Step2: Set the recording schedule time on the time table.

Step3: Click [\[Save\]](#) button to confirm the settings.

Step4: Repeat step 1 to 3 to set another Time Templet.

NOTE: Double-click the item on the left, you can modify the templet's name.

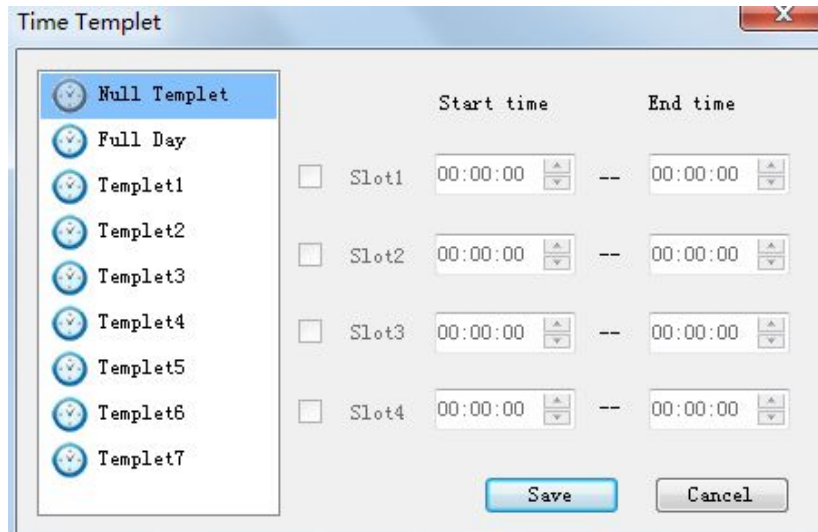


Figure 3.9

3.2.4 Record Settings

Set the time schedule and the recording will start automatically. The default file length is 30 minutes.

When “*Record Settings*” button is clicked, the window will show as below.

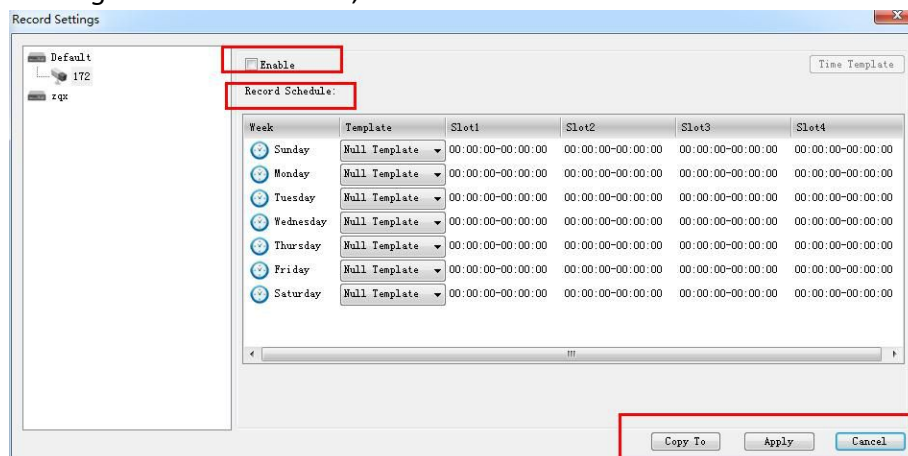


Figure 3.10

Step1: Select a device to record according to the schedule.

Step2: Check [\[Enable\]](#) button.

Step3: Set the recording schedule on the time table.

Step4: Select a Time Templet for each day.

Step5: Click [OK] or [Apply] button to confirm the settings.

Step6: Repeat step 1 to 5 to set other devices.

Step7: Click [Copy to]to copy the schedule to other devices.

3.2.5 Change Password

Change the password for the user.

Note: The length of the password is no less than 6.

3.2.6 Local Settings

This part is mainly used for local settings. Select a disk to store the recorded files and images. You can also set how long to keep the operation logs and alarm logs here.

When you click the “Local Settings” button, the window will show as below.

Note: The default disk is C:\

[Pop up the window when the alarm is triggered]: The window will pop up in front of other programs when alarm is triggered.

[Scheduled recording time length]: We can choose the recording time length of the videos.

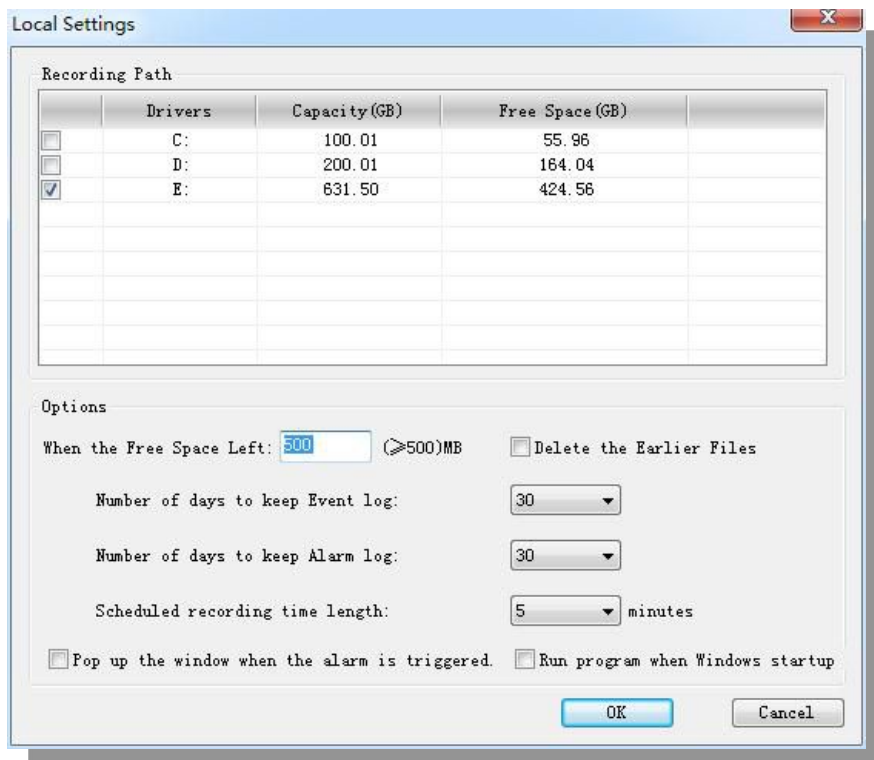


Figure 3.11

3.3 File

File->Lock

When click the [\[Lock\]](#) button, the GPI page will be locked. Then click it again, the window will show as below.

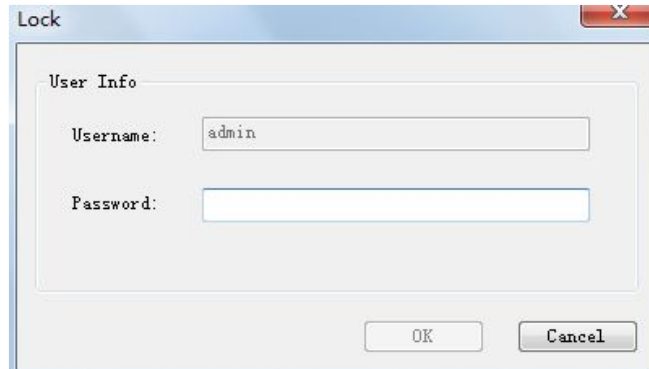


Figure 3.12

You have to key in Username and Password to unlock it.

File->Exit

Username and Password are required when logging out Milesight VMS Lite. And if the [\[Auto Login\]](#) is checked, Milesight VMS Lite will log in without keying in the Username and Password next time.

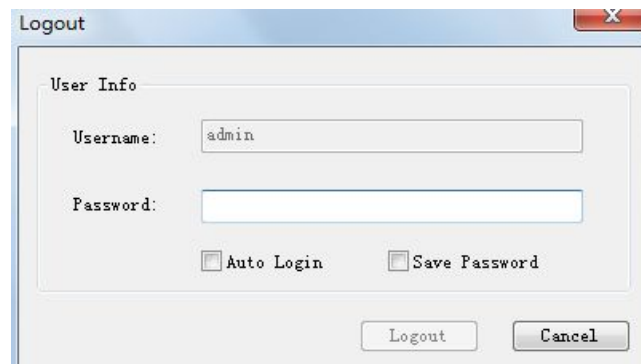


Figure 3.13

3.4 Tool

Tool-> Change Language

Select the language for Milesight VMS Lite.

Tool-> Log Management

You can search the operation logs and alarm logs based on a date. And the “*admin*” user is enabled to perform the delete operation or export operation.

Tool-> Search Tool

Quickly search all the devices.

Tool-> Register Now

Register Milesight VMS Lite for free. If the VMS is not activated, the video image will show with the watermark of Milesight. After it's been activated, the user is enabled to connect the devices without the watermark.

3.5 Help

Milesight VMS Lite information can be checked here.

3.6 Toolbar

Add short cut icons on toolbar as below.



Figure 3.14

1. Device Settings

Please refer to [3.2.1 Device Settings](#).

2. Display /Play toolbar

Display or hide the toolbar.

3. Hide the PTZ

Display or hide PTZ interface.

4. Fullscreen

You can view the live video in full screen mode. To return to the normal screen, press [\[Esc\]](#) button on the keyboard.

5. Live view modes

Support 1/ 2/ 4/ 6/ 8 / 9/ 13/ 16/ 20 / 24 / 30 / 36/ 49 /64 channels playing synchronously.

6. Lock/Unlock

Lock/Unlock Milesight VMS Lite. For details, please refer to [3.3File](#).

Chapter IV Live view


This part is mainly used for real-time video preview and polling mode setting. The first time Milesight VMS Lite is started, you should add some devices to Milesight VMS Lite. You can add the devices manually or by searching devices. For details, please refer to [3.2.1Device Settings->Add Device](#) and [3.2.1Device Settings->Search Device](#). After the device has been added, you have to drag it to the live view window to display the video.

How to connect the device

Step1: Select a device in window 1.

Step2: Drag and drop the device to the position in the live view window. The device is connected automatically and live videos will show in the selected window.

Step3: Repeat step1 to 2 to connect other devices.

Note: Please make sure the device is available .

How to disconnect the device

Step1: Select a device in window 1.

Step2: Right click the device name. Select [\[Enable\]](#), the device will be disconnected. If you want to connect again, click it again.

Step3: Repeat step 1 to 2 to disconnect other devices.

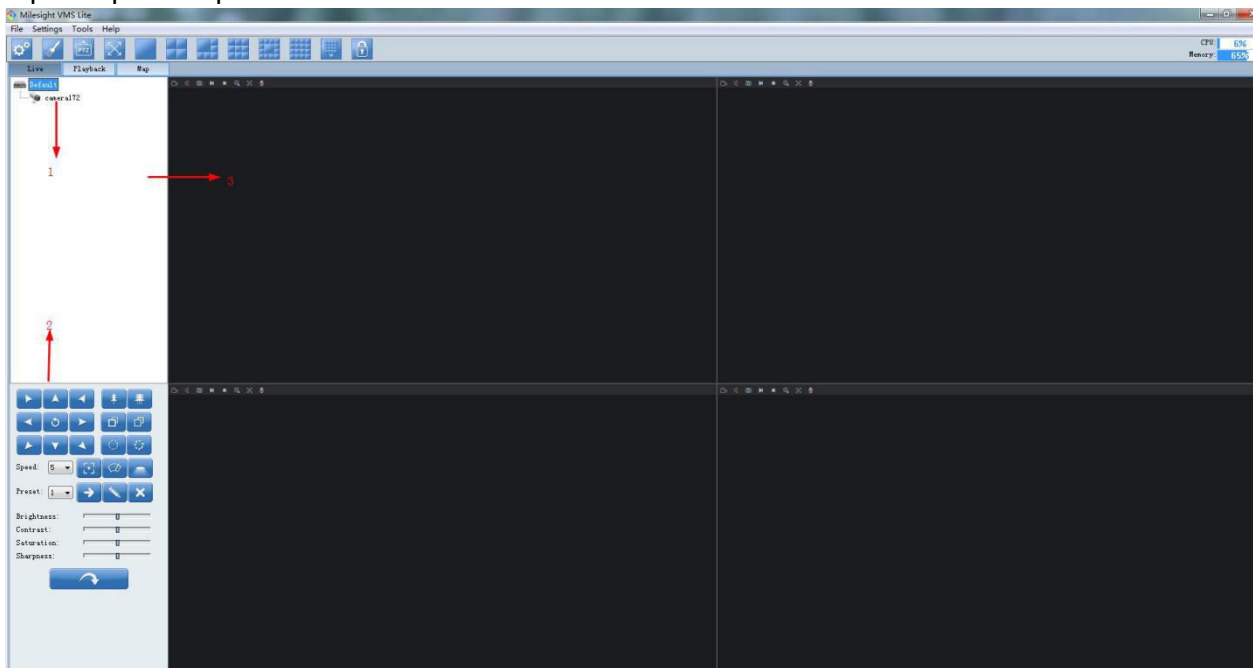


Figure 4.1

How to set the circle mode

A circle mode is to show different videos for a limited time in the same live view window.

Step1: Right click on the live view window and click [\[Carousel\]](#), the window will show as below.

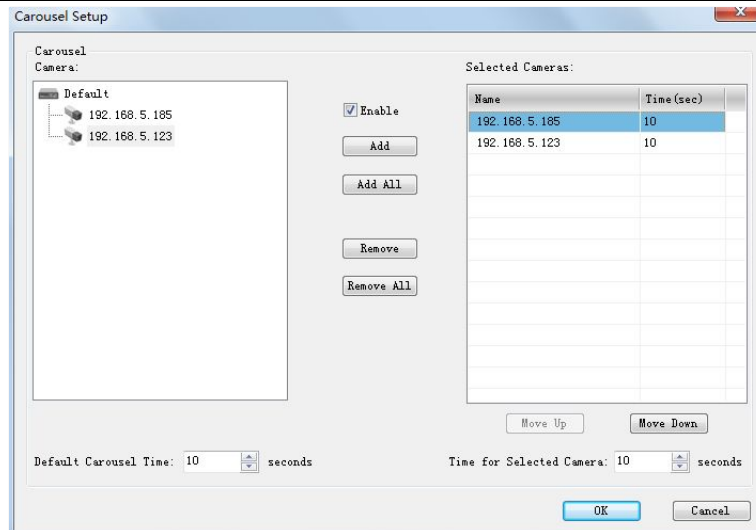


Figure 4.2

Step2: Click [\[Enable\]](#) button.

Step3: Then click the device on the left, click [\[Add\]](#) button to add the device to the list on the right. You can also double-click the device to add it or click [\[Add All\]](#) button to add all devices at a time.

Step4: Double-click the device on the list to remove it from circle mode.

- Note:**
- 1) [\[Move Up\]](#) / [\[Move Down\]](#) to change the polling order of the devices.
 - 2) Default Carousel Time: The default carousel time of each device is 10 seconds.
 - 3) Time for Selected Camera: Click the device on the list to set carousel time for the device (5s at least).
 - 4) Add 10 devices in a circle mode at most.

4.1 Device Tree Window

This part is to display the added devices. Right click the mouse, and the window will show as follow.

Pop-up Menu:

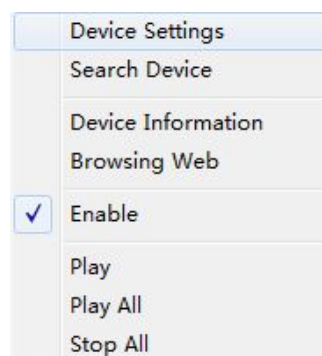


Figure 4.3

Device Settings

Please refer to [3.2.1Device Settings](#).

Search Device

Please refer to [3.2.1Device Settings->Search Device](#).

Device Information

Please refer to [3.2.1Device Settings->Edit Device](#).

Browsing Web

Please refer to [3.2.1 Device Settings->Browsing Web](#).

Enable

Connect or Disconnect the device.  is available and  is unusable.

Note: If the state is unusable, the device is unable to connect.

Play




Display.

Play All

Show the videos of all available devices.

Stop All




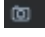

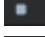


Stop showing all the videos.

Note: 1)  is available,  is unusable,  is failed to connect.
 2) When the device is failed to connect successfully the first time, it will try to reconnect at an increasing intervals until it succeed. If it is failed to connect for a long time, drag it into the live view window to play again. You can also click the device and unable it , and then enable it again, it will connect successfully again.

4.2 Live Toolbar



Figure 4.4

	<i>Record</i>	Record manually. And this icon will turn into  .
	<i>Speaker</i>	Play Speaker or stop it.
	<i>Snapshot</i>	Take a snapshot when viewing.
	<i>Display</i>	Display.
	<i>Stop Display</i>	Stop showing the videos.
	<i>Zoom In</i>	Enable to zoom in a specific area of video image with mouse wheel.
	<i>Fullscreen</i>	You can view the live video in full screen mode. To return to the normal screen, press [Esc] button on the keyboard.
	<i>Audio</i>	Play Audio or stop it (Audio is unusable in the polling live view window)

4.3 Live View Workspace

This part is used for displaying the live view.

Right click the mouse, and the window will show as follow.

Pop-up Menu:



Figure 4.5

<i>Play</i>	Display.
<i>Stop</i>	Stop showing the videos.
<i>Remove</i>	Remove the device from the live view window.
<i>Carousel</i>	Set the live view window into a circle mode.
<i>16:9</i>	The original screen size can adjust to 16:9.
<i>4:3</i>	The original screen size can adjust to 4:3.
<i>Resize</i>	Return to the original screen size.
<i>Mute</i>	Stop audio.
<i>Mute All</i>	Stop playing all the audios.
<i>Mute Other</i>	Stop playing other audios.
<i>Exit Fullscreen</i>	Return to the normal screen.
<i>Fullscreen</i>	You can view the live video in full screen mode.

4.4 PTZ Control

This part is for the flexibility of remote pan/tilt/zoom through operator control. It is possible to zoom in small distant objects with exceptional clarity. The user can easily track objects with high precision by using a mouse or joystick.



Figure 4.6

<i>Speed</i>	PTZ rotation speed control.
<i>Preset</i>	Select a device.
<i>Goto</i>	Operate the selected device.
<i>Set</i>	Set the new device.
<i>Clear</i>	Clear old device.
<i>Brightness</i>	A brighter scene appears if a higher level of brightness has been selected.
<i>Contrast</i>	The difference in color and light between different parts of an image.
<i>Sharpness</i>	Make image more sharp.
<i>Default</i>	The default values of Brightness/Contrast/Saturation.

Chapter V Playback

In this part, you can search and play back the recorded files of a selected IP device. When you click the [\[Playback\]](#) button, the window will show as below.

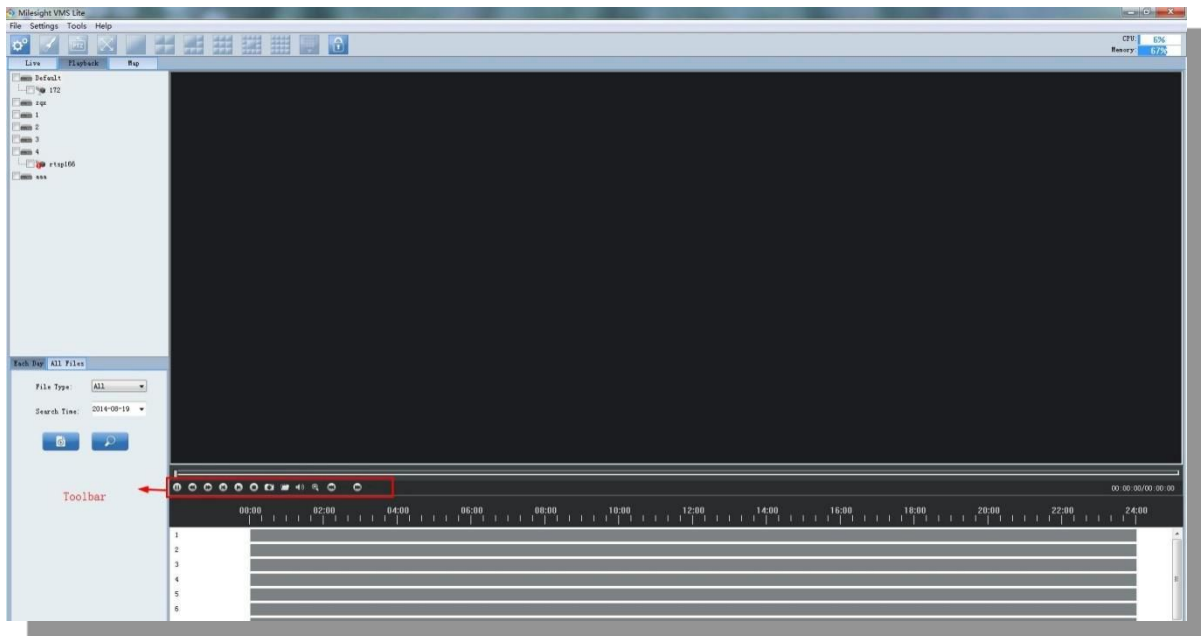


Figure 5.1

How to Replay the Recorded Files

There are two ways to search the recorded video files. One Way is to search only by one date. And the other is to search recorded files of multiple days. The details are as below.

Method 1:

Step1: Select which device to replay on the left, and then check it.

Step2: Select a date and the file type you want to search. The File Type includes: All / Manual / Motion / Schedule.

Step3: Click [\[Search\]](#) button.

Step4: Click the file on the list and the recorded file will begin to play.

Play Toolbar



Pause/Play Pause video or resume it.








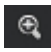


Slow down Slow down to catch details.




Speed up Speed up to skip some details.





Previous Play the previous file.

-  *Next* Play the next file.
-  *Stop* Stop play.
-  *Snapshot* Take a snapshot when playing the file.
-  *File Path* Open the folder of the recorded files.
-  *Play Audio* Play or stop audio. (The default state is to play audio)
-  *Zoom In* Enable to zoom in a specific area of video image with mouse wheel.
-  *Previous Step* Forward video frame by frame.
-  *Next Step* Back video frame by frame

Color of Recorded Files on the List.

 *Red* Refers to those alarm type recorded files.

 *Green* Refers to those manual recorded files.

 *Blue* Refers to those scheduled recorded files.

Operative Skills

Timelines will help you find the correct videos when there are too many files on the list. It's easy to zoom out the area by scrolling the mouse wheel to find exactly the incident you are looking for. Take a file near 10:00 for example, when the position of mouse is between 08:00 and 10:00, then scroll up the mouse wheel, the position of this file will show as follow. Scroll down to turn back. You can hold down the left mouse and drag the mouse to left or to right (between the intervals from 00:00 to 24:00) to get the exact recorded files.

Begin:



Figure 5.2

Scroll up 1:

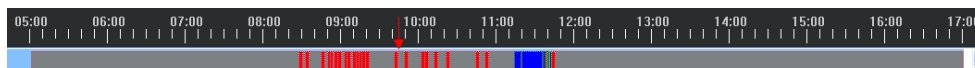


Figure 5.3

Scroll up 2:



Figure 5.4

Scroll up 3:



Figure 5.5

Scroll up 4:

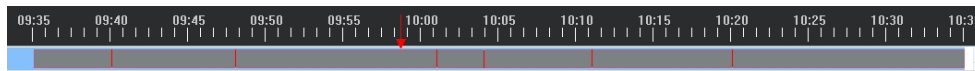


Figure 5.6

Method 2:

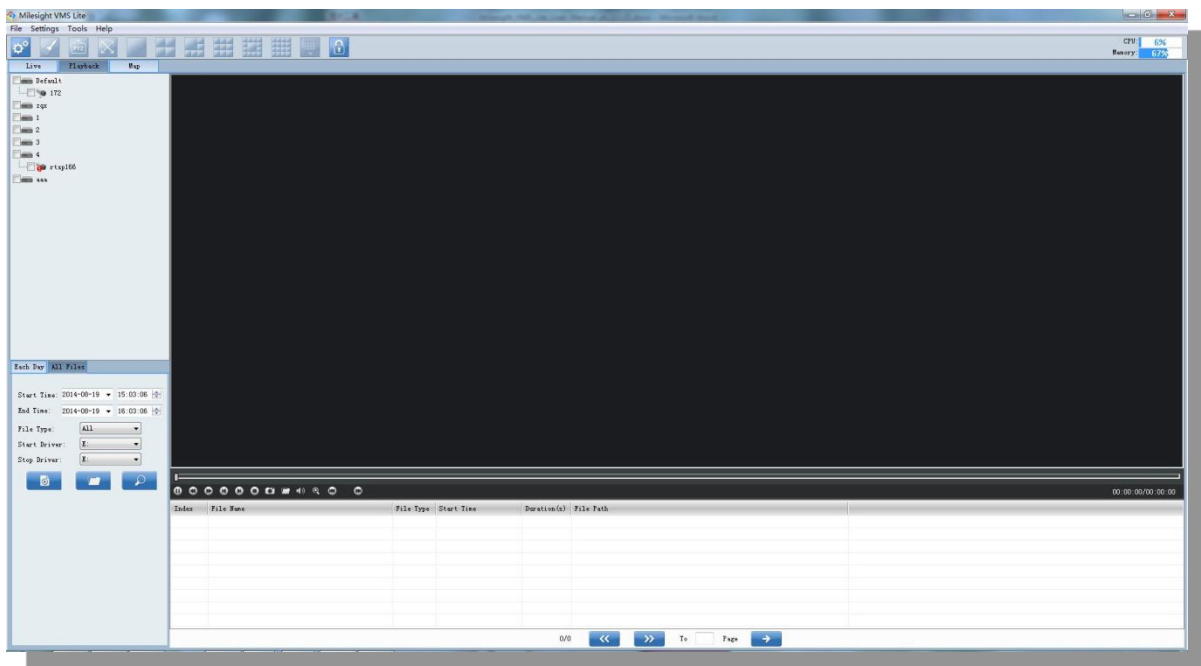


Figure 5.7

Step1: Select the device to replay on the left, and then check it.

Step2: Select the start time, end time, file type, start driver and end driver you want to search. The File Type includes: All / Manual / Motion / Schedule.

Step3: Click [\[Search\]](#) button. All the files will be listed by page and you can double-click the files to play it. Download or delete the files by right clicking on the list.

Note:

Open File: Choose to play any *.avi file. (No need to choose a camera first)

Open Folder: Choose to play all the *.avi files under the folder. (No need to choose a camera first)

Chapter VI Map

In this part, you can add an electronic map and different cameras to the map. When you click the [\[Map\]](#) button, the window will show as below.

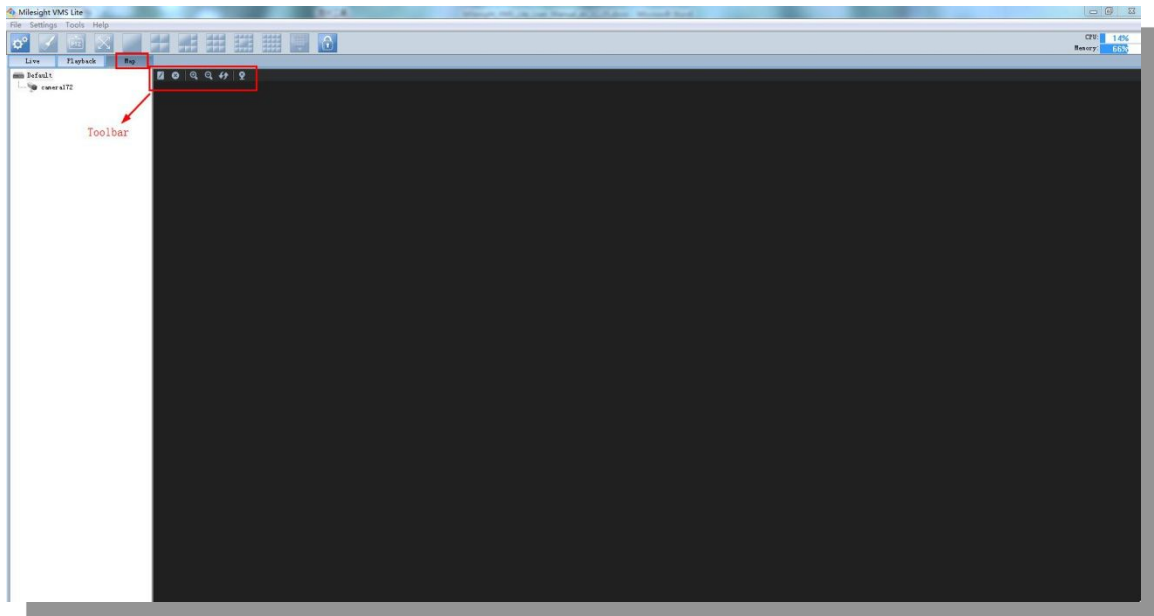



Figure 6.1

6.1 Toolbar

 *Modify* When [\[Modify\]](#) button is clicked, the window will show as below. Different image formats such as [bmp](#) / [gif](#) / [png](#) / [jpg](#) are supported.

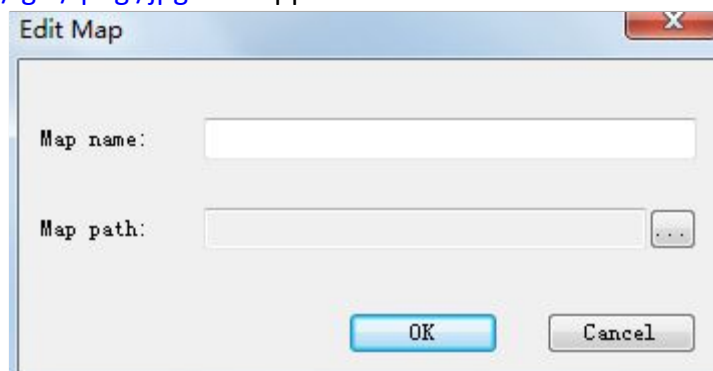

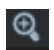




Figure 6.2

 *Delete Map* Remove the map from Milesight VMS Lite.

 *Zoom In* Enlarge the picture to see more details.

 *Zoom Out* Zoom out the map.

 **Reset** Return the map to its original size.

 **Delete Hot** Remove the camera from the map.

6.2 Pop-Up Menu

Right-click the map (anywhere except the devices), and a menu will pop-up as below.

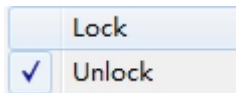


Figure 6.3

Lock If the map is locked, you can do nothing with the map but zoom in or zoom out.

Unlock You can do anything if the map is unlocked.

Right-click the device, and a menu will pop-up as below.

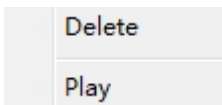


Figure 6.4

Delete Remove the camera from the map.

Play Live preview.

6.3 Add the Hot

Click the device and drag it to the E-map, then it will be added successfully. After the device has been added on the E-map, you can double click on the hot to play.



Figure 6.5

Chapter VII Service

Milesight Technology Co., Ltd provides customers with timely and comprehensive technical support services. End-users can contact your local dealer to obtain technical support. Distributors and resellers can contact directly with Milesight for technical support.

Technical Support Mailbox: support@milesight.com

Web: <http://www.milesight.com>

Online Problem Submission System: <http://www.milesight.com/service/feedback.asp>

Address: Room 202, No.23 Wanghai Road, 2nd Software Park, Xiamen, China

Zip Code: 361006

TEL: +86-592-5922772

FAX: +86-592-5922775

Milesight
More in Sight