



Milesight-Troubleshooting-  
VMS Pro Multi Monitor

Milesight Technology Co.,Ltd.

V1.0

<b>VMS Version</b>	<b>Pro 2.1.0.20</b>	<b>Update</b>	<b>2016.8.31</b>
--------------------	---------------------	---------------	------------------

## 1.1 VMS-Pro Multi-Monitor Introduction

The VMS-Pro provides a powerful monitor surveillance tool that enhances security by providing administrators flexibility to monitor the live video from the network camera. It's a video management system that works with the network cameras to provide video monitoring.

## 1.2 Environmental Requirement

The multi-monitor function supports up to 4 monitors. This function requires your PC need to support at least 2 display interfaces(HDMI/DVI/VGA).

## 1.3 Performance Overview

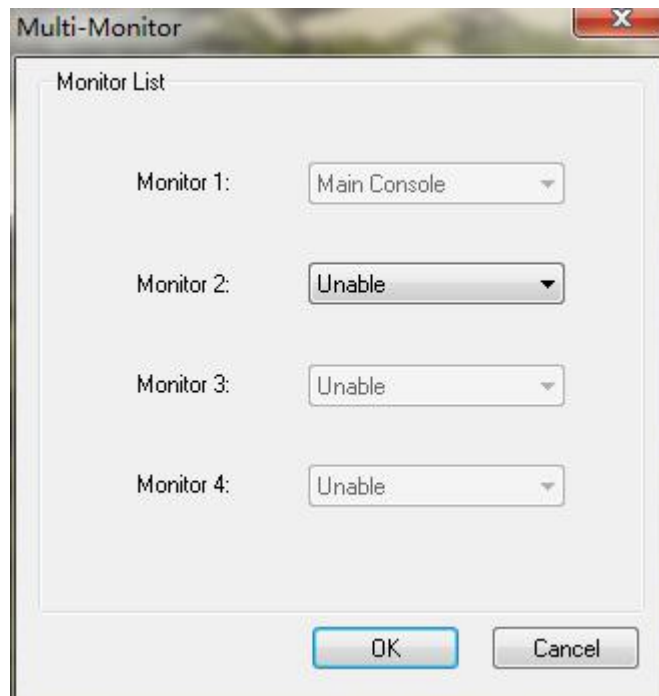
Multi Monitor	Unable	Disable the multi screen function
	Live Screen	Enable the multi screen function and play Live View in this selected screen
	Full Screen	This function regard this screen as an assistant screen to full screen a selected channel
	Alarm Screen	When alarming, the alarm channel will pop up to this screen

# Chapter II Operations and Settings

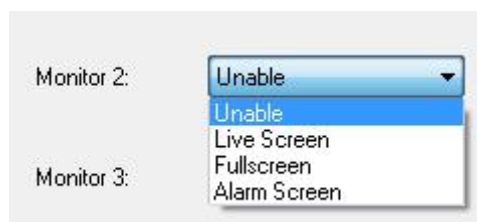
Add additional displays to the PC. Click **Tools, Multi Monitor** to enter the configuration.



Then the window will pop up:

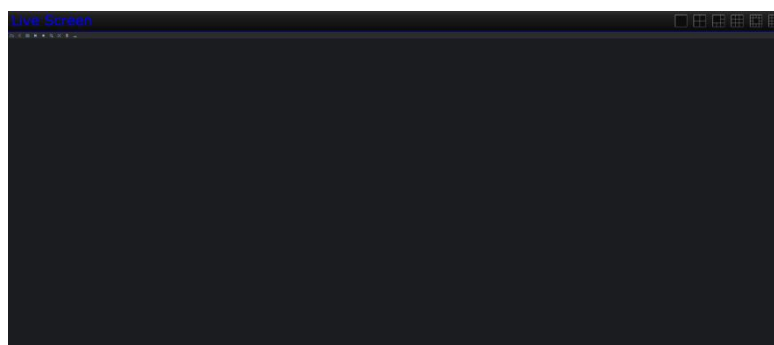


There are three more options for you to choose.

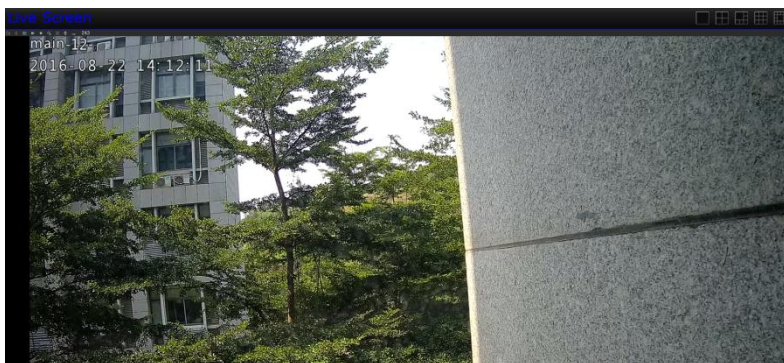


## 2.1 Live Screen

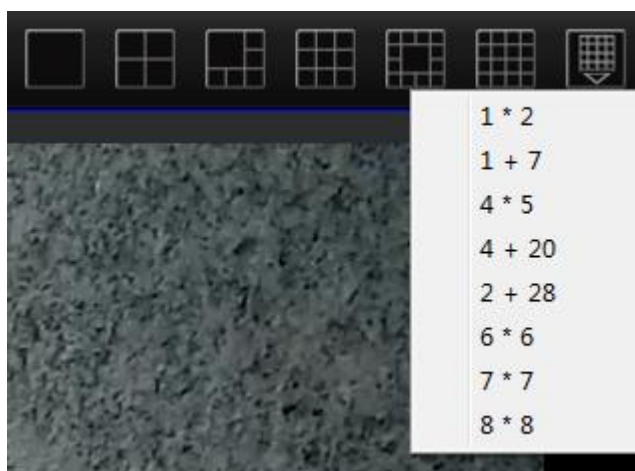
Choose the Live Screen, the second screen will show the display:



Left click your interested channel, drag and drop to the second screen. It will quickly display the Live View of this channel.



You can also select the different theme view to see more channels.



When playing Live View, you can right click the mouse. The list is shown follow:

	Description
Add camera to view	Add one or more cameras to the second displayer
Play/Stop	Play/Stop the Live View
Remove/Remove All	Remove the chosen channel / Remove all the channel in this displayer
16:9 / 4:3 /Original	To adjust the aspect ratio for a selected channels
Resize	To restore the original aspect ratio.
Mute/ Mute all / Mute other	Mute this channel / Mute all the channels / Mute other channels
Exit Fullscreen	When Fullscreen, this option can exit the Fullscreen display
Fullscreen	When multi-screen, this option can Fullscreen the chosen channel

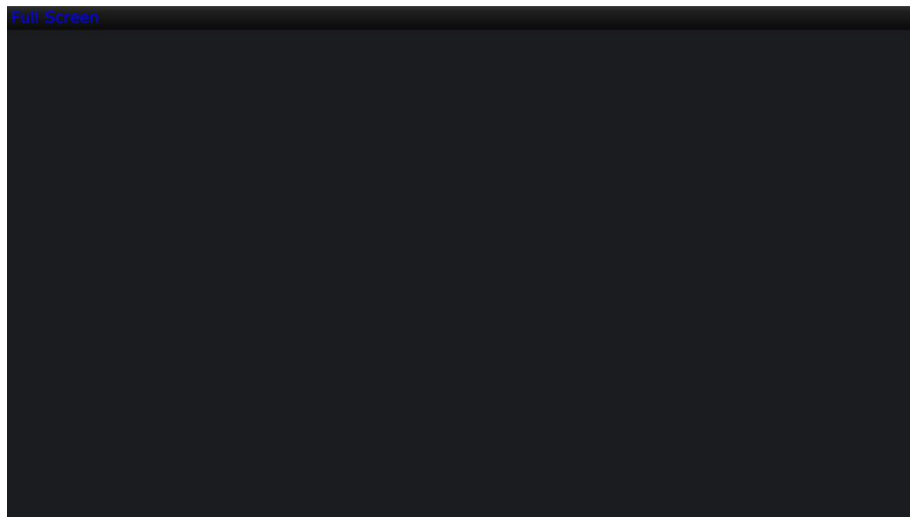
The Live Toolbar is available in the second displayer.



For more details please refer to User Manual of VMS Pro.

## 2.2 Fullscreen

Choose the Fullscreen, the second screen will show the display:



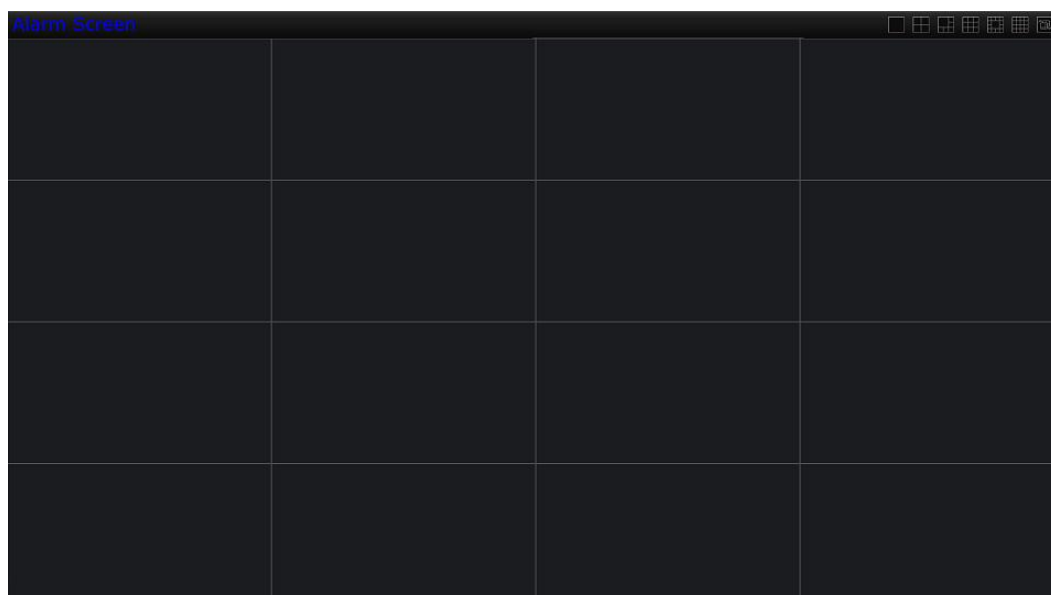
To use the second screen for fullscreen, you can double click a Live View channel, and this channel will be fullscreen displayed in the second screen.

When playing fullscreen Live View, you can right click the mouse. The list is shown follow:

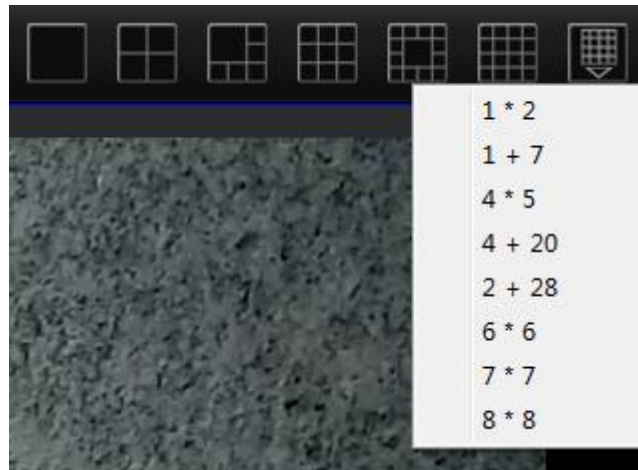
Capture	Take a snapshot to the second screen
Record	Record the second screen after click this option
Full work area	Click this option to make all the monitors show this fullscreen

## 2.3 Alarm Screen

Choose the Alarm Screen, the second screen will show the display:

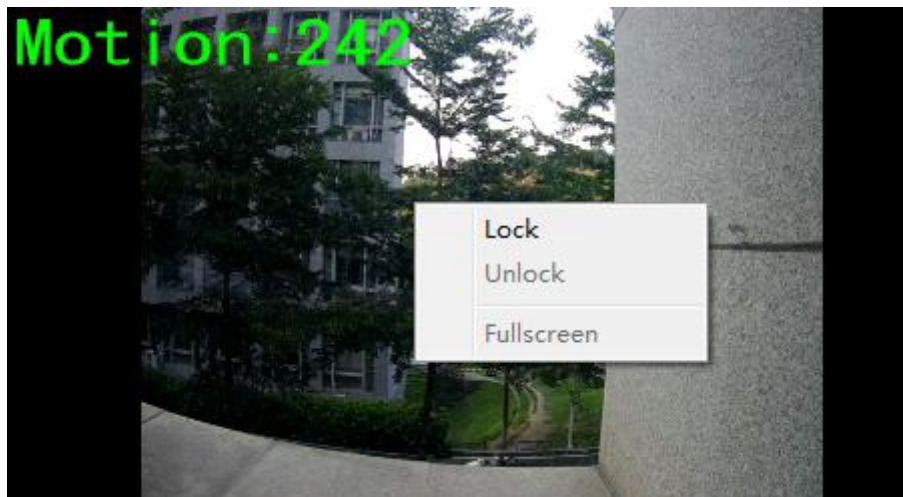


You can also select the different theme view to see more channels.

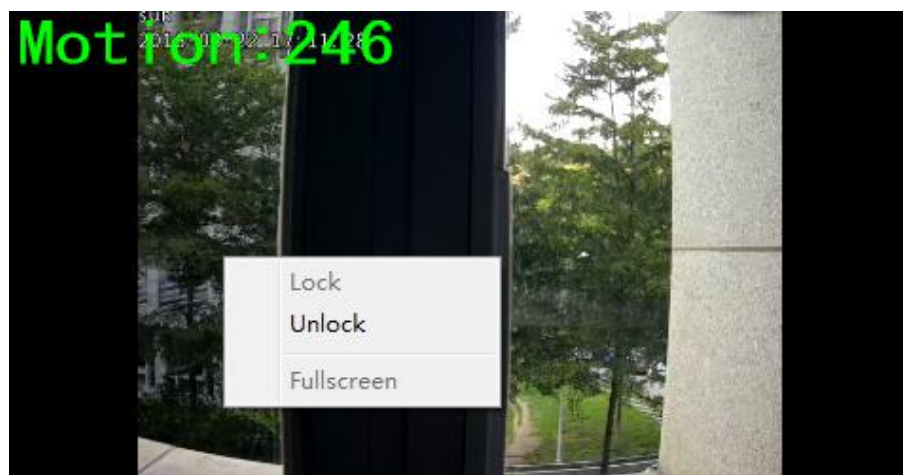


And you should set alarm parameters and set up the record schedule to make this alarm function work. After that, if any of the motion detection has triggered, the Live View will be shown in the second screen for 5 seconds.

You can right click on the alarm channel, choose **Lock** to hold the channel.



Click the **Unlock** option to unlock the locked channel.



Click the Fullscreen option to make the selected channel fullscreen.

-END-